

PARLIAMENT Sächsischer Landtag / Saxon State Parliament

GENERAL DATA

General data of the region

Country (*area and population*):

Germany 357.000 square kilometers, 82 million inhabitants

Region (*area and population*):

Saxony 18.000 square kilometers, 4,1 million inhabitants

Regional government:

Prime Minister Stanislaw Tillich (Christian Democratic Union) and nine State Ministers

Competences of the region:

exclusive competence legislation:

- Education
- Culture
- Police
- Local law and Circle law
- Broadcast and media

competing legislation competence:

- Civil law and criminal law
- Commercial law and nuclear law
- Industrial law and Land Rights
- Immigration law



PRESIDENCY 2012

General data of the Parliament

- Headquarters: Dresden
- Language: German
- Date of foundation: 3rd October 1990

Web site:

- www.sachsen.de

[PHOTOGRAPHS]

Logo



Sächsischer Landtag

Coat of Arms



FUNCTIONS OF THE PARLIAMENT

Brief description of the functions of the Parliament

- Legislative function
- Elective function
- Control function



PRESIDENCY 2012

COMPOSITION

Total composition:
132

Gender distribution and average age:
feminine → 37 male → 95
45 years

Electoral system:
Personalized proportional representation with closed lists

Term of office:
every 5 years in Saxony

Voting conditions (active suffrage):
minimum age 18 years

Conditions for eligibility (passive suffrage):
you can be elected if you are 18 years old

Composition of the Parliament as a result of the last parliamentary elections

Political parties and number of seats

| | |
|--|----|
| - Christian Democratic Union (CDU) | 58 |
| - The LEFT | 29 |
| - Social Democratic Party of Germany (SPD) | 14 |
| - Liberal Democratic Party (FDP) | 14 |
| - The Green | 9 |
| - National-Democratic Party of Germany (NPD) | 8 |



PRESIDENCY 2012

Parliamentary political groups

Requirements to form a parliamentary political group

Parliamentary parties are groups of at least seven members who belong to the same party or are elected to the state parliament as a result of the proposals of the same party. Each member of the state parliament can only belong to one parliamentary party.

Political group CDU

Name:

CDU Saxony parliamentary party in the Saxon State Parliament

*Chairman of the parliamentary party:
Steffen Flath, MSP*

*Number of members:
58*

Contact details:

*CDU-Fraktion im Sächsischen Landtag
Bernhard-von-Lindenau-Platz 1
01067 Dresden*

Telephone: +49 351 493-5555

Fax: +49 351 493-5441

cduinfo@cdu-sachsen.de

[Logo of the parliamentary political group/political party or electoral coalition]

Political group DIE LINKE

Name:

THE LEFT.Saxony parliamentary party in the Saxon State Parliament

*Chairman of the parliamentary party:
Until July 31 2012: Dr. André Hahn, MSP
From August 01 2012: Rico Gebhardt*

[Logo of the parliamentary political group/political party or electoral coalition]



PRESIDENCY 2012

| | |
|--|--|
| <p><i>Number of members:</i> 29</p> <p><i>Contact details:</i> <i>Fraktion DIE LINKE. im Sächsischen Landtag</i> <i>Bernhard-von-Lindenau-Platz 1</i> <i>01067 Dresden</i> <i>Telephone: +49 351 493-5800</i> <i>Fax: +49 351 493-5460</i> linksfraktion@slt.sachsen.de</p> | |
| <p>Political group SPD</p> <p><i>Name:</i> <i>SPD Saxony parliamentary party in the Saxon State Parliament</i></p> <p><i>Chairman of the parliamentary party:</i> <i>Martin Dulig, MSP</i></p> <p><i>Number of members:</i> 14</p> <p><i>Contact details:</i> <i>SPD-Fraktion im Sächsischen Landtag</i> <i>Bernhard-von-Lindenau-Platz 1</i> <i>01067 Dresden</i> <i>Telephone: +49 351 493-5700</i> <i>Fax: +49 351 493-5452</i> spdfraktion@slt.sachsen.de</p> | <p><i>[Logo of the parliamentary political group/political party or electoral coalition</i></p>  |
| <p>Political group FDP</p> <p><i>Name:</i> FDP Saxony parliamentary party in the Saxon State Parliament</p> <p>Chairman of the parliamentary party: Holger Zastrow, MSP</p> <p>Number of members: 14</p> | <p><i>[Logo of the parliamentary political group/political party or electoral coalition</i></p>  |



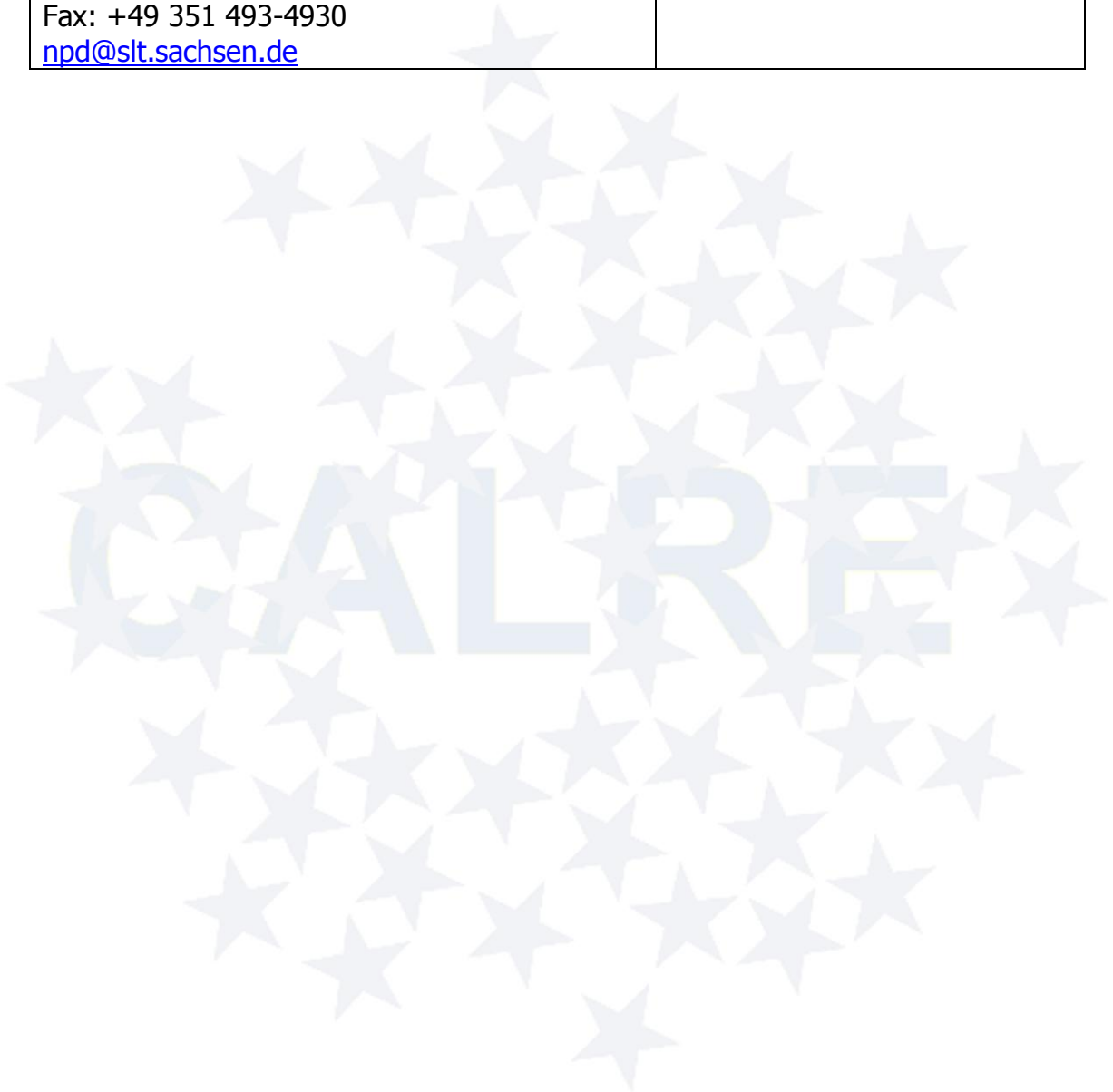
PRESIDENCY 2012

| | |
|---|---|
| <p>Contact details: FDP-Fraktion im Sächsischen Landtag Bernhard-von-Lindenau-Platz 1 01067 Dresden Telephone: +49 351 493-4700 Fax: +49 351 493-4730 fdp@slt.sachsen.de</p> | |
| <p>Political group BÜNDNIS 90/DIE GRÜNEN</p> <p><i>Name:</i> THE GREEN Saxony parliamentary party in the Saxon State Parliament</p> <p>Chairman of the parliamentary party: Antje Hermenau, MSP</p> <p>Number of members: 9</p> <p>Contact details: Fraktion BÜNDNIS 90/DIE GRÜNEN im Sächsischen Landtag Bernhard-von-Lindenau-Platz 1 01067 Dresden Telephone: +49 351 493-4800 Fax: +49 351 493-4809 gruene-fraktion@slt.sachsen.de</p> | <p><i>[Logo of the parliamentary political group/political party or electoral coalition]</i></p>  |
| <p>Political group NPD</p> <p><i>Name:</i> NPD Saxony parliamentary party in the Saxon State Parliament</p> <p>Chairman of the parliamentary party: Holger Apfel, MSP</p> <p>Number of members: 8</p> | <p><i>[Logo of the parliamentary political group/political party or electoral coalition]</i></p>  |



PRESIDENCY 2012

| | |
|--|--|
| <p>Contact details: NPD-Fraktion im Sächsischen Landtag Bernhard-von-Lindenau-Platz 1 01067 Dresden Telephone: +49 351 493-4900 Fax: +49 351 493-4930 npd@slt.sachsen.de</p> | |
|--|--|



THE GOVERNING BODIES OF THE PARLIAMENT

The Speaker/President

Dr. Matthias Röblier

Method of election:

President is elected in a general, equal, direct and secret ballot, in accordance with an improved proportional representation by citizens who are eligible to vote.

Term of office and functions:

5 years

Functions:

The President manages the day-to-day operations of the Landtag and represents the state with regard to all legal transactions and legal disputes of the Landtag. He exercises domiciliary rights and police powers within the Landtag building. The President heads the meetings of the Landtag's plenum and is in charge of the employees of the Landtag office and the State Data Protection Officer.

Details of current President

- Born January 14th 1955 in Dresden
- Protestant (Lutheran), married, 2 sons
- Degree in Mechanical Engineering at Dresden University of Technology
- Honorary Member of the Board of Trustees of the Karl May Foundation
- Former Saxon State Minister

Details contact

Sächsischer Landtag

Dr. Matthias Röblier

Bernhard-von-Lindenau-Platz 1

01067 Dresden

Telefon: 0351 493-50

Telefax: 0351 493-59 00



PRESIDENCY 2012

[PHOTOGRAPH]



Dr. Matthias Röbler



PARLIAMENTARY OPERATING ORGANS

Plenary session

Composition:

See General Data

Functions:

The decisions of the state parliament are almost made by the plenum, generally in public sessions. The plenum is also the forum for public debate, important political statements by individual members of parliament, parliamentary parties and the state government.

[PHOTOGRAPHS]

Committees

Composition:

The state parliament forms committees comprising members from all parliamentary parties to prepare the decisions by the plenum.

Functions:

- They are the forum for thorough discussions by the experts from the Parliamentary Parties.
- They primarily deal with matters which are allocated to them, generally by the plenum.
- They can summon public hearings of experts, interest groups and other persons to provide information on a subject of discussion.
- Their meetings are generally not public.



PRESIDENCY 2012

- Types:*
- Budget and Budgetary Control
 - Legal Affairs, Justice and Europe
 - Safety
 - Schooling and Sports
 - Education and Research
 - Environment and Agriculture
 - Petition
 - Economical, Transport and Labour Affairs
 - Social Affairs

[PHOTOGRAPH]

CALRE

PARLIAMENTARY ADMINISTRATION

General data

Personnel: Number of full-time employees

191 employees

Distribution by academic degrees

Functions

Brief description of functions

Apart from running the parliament on a daily basis, the administration supplies MSPs with research and analysis, provides advice on legislative drafting, manages and archives information, ensures that parliamentary rules are respected, and more. The Saxon State Parliament runs his own library and research units, as well as websites and publications.

General Secretariat

Head of administration

Direktor beim Landtag Dr. Christopher Metz

Contact details:

Sächsischer Landtag

Bernhard-von-Lindenau-Platz 1

01067 Dresden

Telefon: 0351 493-50



PRESIDENCY 2012

Organic Structure of the Parliament

Description

See the organizational structure for further details.

Bodies/Departments/Services

List

Functions

Number of employees

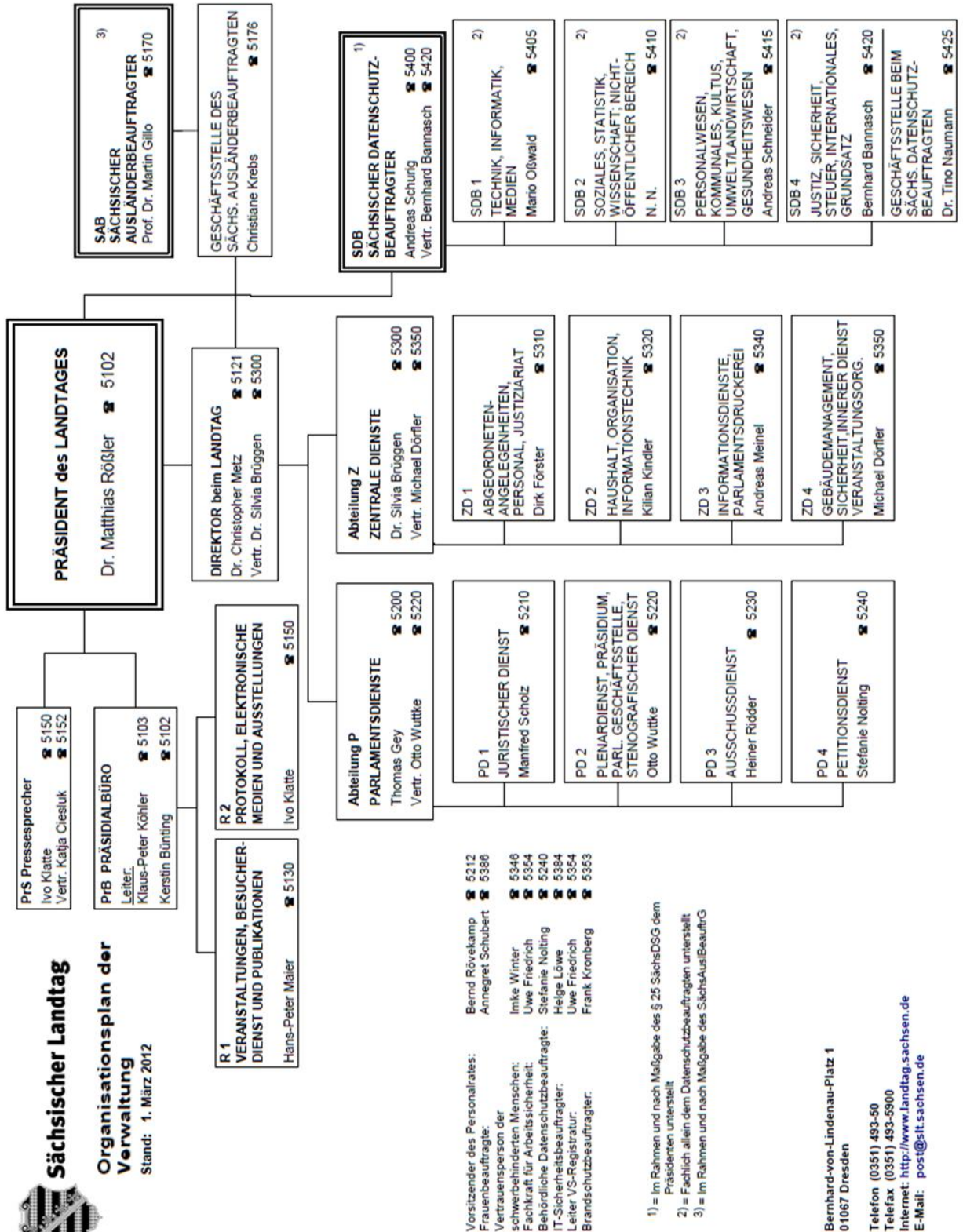
Contact details



Sächsischer Landtag

Organisationsplan der Verwaltung

Stand: 1. März 2012



- Vorsitzender des Personalarates: Bernd Rövekamp ☎ 5212
 Frauenbeauftragte: Annegret Schubert ☎ 5388
 Vertrauensperson der schwerbehinderten Menschen: Imke Wimer ☎ 5348
 Fachkraft für Arbeitssicherheit: Uwe Friedrich ☎ 5354
 Behördliche Datenschutzbeauftragte: Stefanie Nolting ☎ 5240
 IT-Sicherheitsbeauftragter: Heige Löwe ☎ 5384
 Leiter VS-Registrierung: Uwe Friedrich ☎ 5354
 Brandschutzbeauftragter: Frank Kronberg ☎ 5353

1) = Im Rahmen und nach Maßgabe des § 25 SächsDSG dem Präsidenten unterstellt
 2) = Fachlich allein dem Datenschutzbeauftragten unterstellt
 3) = Im Rahmen und nach Maßgabe des SächsAusBeauftrG

Bernhard-von-Lindenaus-Platz 1
01067 Dresden
 Telefon (0351) 493-50
 Telefax (0351) 493-5900
 Internet: <http://www.landtag.sachsen.de>
 E-Mail: post@stl.sachsen.de



PRESIDENCY 2012

Contact details for CALRE

Contact person/department: Wolfgang Rausch, Desk Officer
Juristischer Dienst, PD 1

Working languages: german

Contact details: Sächsischer Landtag
Bernhard-von-Lindenau-Platz 1
01067 Dresden
Tel.: +49 (0) 351 / 493 5213
E-Mail: wolfgang.rausch@slt.sachsen.de
www.landtag.sachsen.de



BUILDING OF THE PARLIAMENT

History: - built in 1993
 - first political session in that building in 1994

Description

The Saxon State Parliament was the first new parliament building to be erected in a former East German state following German reunification.

[PHOTOGRAPHS]

